

Eeyou Marine Region

ᐃᑦᑦᑦᑦ ᑕᑎᐃᑦᑦᑦᑦ ᑎᑦᑦᑦᑦᑦᑦ



Traditional Ecological Knowledge

ᐱᐃᑦᑦᑦᑦᑦᑦᑦᑦ ᑦᑦᑦᑦᑦᑦᑦᑦ ᑎᑦᑦᑦᑦᑦᑦᑦᑦ

SHB Polar Bear Hearing

Whapmagoostui / Kuujuarapik

February 5, 2025

ᑕᑦᑦᑦᑦᑦᑦᑦᑦ ᑦᑦᑦᑦᑦᑦᑦᑦ ᑎᑦᑦᑦᑦᑦᑦᑦᑦ

ᑕᑦᑦᑦᑦᑦᑦᑦ / ᑦᑦᑦᑦᑦᑦᑦᑦ

ᐱᐃᑦᑦᑦ 5, 2025



Sources and references

ᑭᓱᑦ ᑲᓱᓸᓄᓐ ᓱᓱᓄᓐ ᓱᓱᓄᓐ ᓱᓱᓄᓐ ᓱᓱᓄᓐ ᓱᓱᓄᓐ

- Cree Knowledge of Polar Bears in the Eeyou Marine Region (EMRWB, 2020)
ᑭᓱᓄᓐ ᓱᓱᓄᓐ ᓱᓱᓄᓐ ᓱᓱᓄᓐ ᓱᓱᓄᓐ ᓱᓱᓄᓐ ᓱᓱᓄᓐ ᓱᓱᓄᓐ ᓱᓱᓄᓐ ᓱᓱᓄᓐ
- Observation database – Direct observation or evidence collected by CTA-EMR officers
ᓱᓱᓄᓐ ᓱᓱᓄᓐ ᓱᓱᓄᓐ ᓱᓱᓄᓐ ᓱᓱᓄᓐ ᓱᓱᓄᓐ ᓱᓱᓄᓐ ᓱᓱᓄᓐ ᓱᓱᓄᓐ ᓱᓱᓄᓐ ᓱᓱᓄᓐ
- James Bay Polar Bear Ecology (McGill U) (2020-present)
ᓱᓱᓄᓐ ᓱᓱᓄᓐ ᓱᓱᓄᓐ ᓱᓱᓄᓐ (ᓱᓱᓄᓐ ᓱᓱᓄᓐ ᓱᓱᓄᓐ) (2020-ᓱᓱᓄᓐ ᓱᓱᓄᓐ)
- Traditional Ecological Knowledge of Polar Bears in the Northern Eeyou Marine Region (Laforest et al., 2018)
ᓱᓱᓄᓐ ᓱᓱᓄᓐ ᓱᓱᓄᓐ ᓱᓱᓄᓐ ᓱᓱᓄᓐ ᓱᓱᓄᓐ ᓱᓱᓄᓐ ᓱᓱᓄᓐ ᓱᓱᓄᓐ ᓱᓱᓄᓐ ᓱᓱᓄᓐ
- Polar Bear Report – COTA (Pachano, 2021)
ᓱᓱᓄᓐ ᓱᓱᓄᓐ ᓱᓱᓄᓐ ᓱᓱᓄᓐ



Traditional Knowledge in the EMR ᐱᐅᓯᐅᑖᑦᑎᑭᑦ ᑖᑲᐅᓱᓴᓴᐅᓯᑦ ᐃᓴᓶᑦ ᑕᑎᐅᓄᓴᑕ

ᓄᓄᑦᐃᑎᓄᓯᓂᐅᑦ ᐅᑦᓴᓴᓄ ᐃᓴᓶᑦ ᑖᑲᐅᓱᓴᓴᐅᓯᑦ ᓄᓄᐃᑦ ᐃᓴᓶᑦ ᑕᑎᐅᓄᓴᑕ ᓄᓄᑦᐃᓯᓂᐅᑦ (EMRWB, 2020) ᐅᓴᓶᑦᑕᐅᓯᑦ:

- ᓄᐅᑦᓴᓴᑎᑲ ᐅᑦᓴᓴᑦ ᐃᓴᓶᑦ ᑖᑲᐅᓱᓴᓴᓯᓂᑲ ᐱᑦᓴᓴᓴᐅᓂᑦᑲᓴᐅᓯᑦ ᓄᓄᐃᑦ, ᑕᐅᐅᑭᑎᓯᓴᓯᓂᓄ ᓄᓄᓴᓂᓴ ᑖᓶᓯᑲᑦᑕᓂᓴᓴᓯᑦ;
- ᐃᑦᓴᓂᐅᑎᑕᐅᑭᑎᓯᓂᓄ ᐅᓯᑦᓴᑕᓴᓂᓄᓯᓂᑲ ᐃᓴᑦᑖᓴᓴᓂᓴᑕ ᐅᓄᓴᓂᓴᑕᓴ;
- ᐃᑲᓴᓴᑭᑎᓯᓂᓄ ᐃᓴᑕᐅᑎᑦᓴᓂᑲᐅᑦ TEK-ᓂᑲ ᐃᓴᓶᑦᑕᑎᐅᓄᓴᑕᓴ ᓄᓄᑦᐃᑎᓄᓯᓂ ᓄᓄᓴᐅᑦ ᑕᑎᐅᓄᓴᑕᓴ ᓄᓄᑦᐃᑎᓄᓯᓂ ᑲᓴᓴᓴᑖᑎᐅᓂᓴᓴᑲ ᑖᓶᓄᓴᓴᑭᑎᓂᑲ
- ᓴᓴᓂᓴᑭᑦ ᑕᓴᐅᓴᓴᓂᓄᓯᓂᑲ ᑲᓴᓴᓴᑖᑎᓂᑲ ᑖᑲᓄᐃᓴᓴᑭᑎᑦᐅᓂᑲ ᐃᓴᓶᑦ ᑕᑎᐅᓄᓴᑕ ᓄᓄᑦᐃᑎᓄᓯᓂ ᑖᓴᓴᓴᑖᓴᑕᓴᓂᑲ



ᐃᓴᑦᑖᑦ ᐃᓴᓶᑦ ᑕᑎᐅᓄᓴᑕᓴ
 EYYOU MARINE REGION WILDLIFE BOARD
 CONSEIL DE GESTION DES RESSOURCES
 FAUNTIQUES DE LA REGION MARINE D'EYYOU
 ᐃᓴᑦ ᑕᑎᐅᓄᓴᑕᓴᑦ ᑲᓴᓴᓴᑖᓴᑕᓴᑦ

CREE KNOWLEDGE OF POLAR BEARS IN THE EYYOU MARINE REGION

*A Report Based on Information Shared by Cree Knowledge Holders from
 the Coastal Communities of Whapmagoostui, Chisasibi, Wemindji,
 Eastmain, and Waskaganish*



ᐃᓴᑦᑖᑦ ᐃᓴᓶᑦ ᑕᑎᐅᓄᓴᑕᓴ (ᐃᓴᑦ ᑕᑎᐅᓄᓴᑕᓴ)
 Grand Council of the Crees (Niyai Nitchoi)
 Grand Conseil des Cris (Eeyou Nitchoi)

ᐃᓴᑦ ᑲᓴᓴᓴᑖᓴᑕᓴ
 Cree Nation Government
 Gouvernement de la Nation Crie

Traditional Knowledge in the EMR



Cree Knowledge of Polar Bears in the Eeyou Marine Region (EMRWB, 2020)

- Collaboration between EMRWB, CNG and CTA
 ᐱᓇᓯᓐᓂᓯᓐᓂᓐ ᐱᓇᓯᓐᓂᓯᓐᓂᓐ EMRWB-ᓂᓐ, CNG-ᓂᓐ ᐱᓇᓯᓐᓂᓯᓐᓂᓐ CTA-ᓂᓐ
- Based on 27 interviews conducted by local CTA-EMR officers in Whapmagoostui, Chisasibi, Wemindji, Eastmain and Waskaganish in 2017
 ᐱᓇᓯᓐᓂᓯᓐᓂᓐ 27-ᓂᓐ ᐱᓇᓯᓐᓂᓯᓐᓂᓐ ᓂᓐᓂᓐ CTA-EMR-ᓂᓐ
 ᐱᓇᓯᓐᓂᓯᓐᓂᓐ ᐱᓇᓯᓐᓂᓯᓐᓂᓐ, ᐱᓇᓯᓐᓂᓯᓐᓂᓐ, ᐱᓇᓯᓐᓂᓯᓐᓂᓐ, ᐱᓇᓯᓐᓂᓯᓐᓂᓐ ᐱᓇᓯᓐᓂᓯᓐᓂᓐ
- Used same questionnaire for consistency, maps
 ᐱᓇᓯᓐᓂᓯᓐᓂᓐ ᐱᓇᓯᓐᓂᓯᓐᓂᓐ ᐱᓇᓯᓐᓂᓯᓐᓂᓐ ᐱᓇᓯᓐᓂᓯᓐᓂᓐ ᐱᓇᓯᓐᓂᓯᓐᓂᓐ



ᐱᓇᓯᓐᓂᓯᓐᓂᓐ ᐱᓇᓯᓐᓂᓯᓐᓂᓐ ᐱᓇᓯᓐᓂᓯᓐᓂᓐ
 EYYOU MARINE REGION WILDLIFE BOARD
 CONSEIL DE GESTION DES RESSOURCES
 FAUNGIQUES DE LA RÉGION MARINE D'EYYOU
 ᐱᓇᓯᓐᓂᓯᓐᓂᓐ ᐱᓇᓯᓐᓂᓯᓐᓂᓐ

CREE KNOWLEDGE OF POLAR BEARS IN THE EEYOU MARINE REGION

*A Report Based on Information Shared by Cree Knowledge Holders from
 the Coastal Communities of Whapmagoostui, Chisasibi, Wemindji,
 Eastmain, and Waskaganish*



ᐱᓇᓯᓐᓂᓯᓐᓂᓐ ᐱᓇᓯᓐᓂᓯᓐᓂᓐ
 Grand Council of the Cree (Inqoyit Nuchim)
 Grand Conseil des Cris (Inqoyit Nuchim)

ᐱᓇᓯᓐᓂᓯᓐᓂᓐ
 Cree Nation Government
 Gouvernement de la Nation Cris



Traditional Knowledge in the EMR

Cultural Importance and Perception of Polar Bears

ᐃᑐᑦᐃᒃᑭᑦ ᐱᑦᑭᑭᑦ ᐃᑦᐃᑦᑭᑦ ᐃᑦᐃᑦᑭᑦ ᐃᑦᐃᑦᑭᑦ

Many expressed great respect for polar bear.

ᐱᑦᑭᑦᑭᑦ ᐃᑦᐃᑦᑭᑦ ᐃᑦᐃᑦᑭᑦ ᐃᑦᐃᑦᑭᑦ ᐃᑦᐃᑦᑭᑦ ᐃᑦᐃᑦᑭᑦ.

- *“I respect the way they hunt. We need to protect them, they are in decline.”*
– Resident of Chisasibi
- *“ᐃᑦᐃᑦᑭᑦ ᐃᑦᐃᑦᑭᑦ ᐃᑦᐃᑦᑭᑦ ᐃᑦᐃᑦᑭᑦ ᐃᑦᐃᑦᑭᑦ ᐃᑦᐃᑦᑭᑦ.”*
– ᐃᑦᐃᑦᑭᑦ



Traditional Knowledge in the EMR

Polar Bear observations near Waskaganish and Eastmain:

ᓇᓂᓗᐅ ᑕᓄᓗᑲᓂᑦᑕᓯᓕᓗ ᐃᑲᓂᑦᓗᐅ ᓂᓗᐅᓗᐅ:

- Most observations on Charlton Island and neighbouring islands + Cape Hope
- Several cabins on those islands (goose hunting) & significant number of observations & interactions
- Many observations during fieldwork or training (bird surveys, polar bear study, COTA captain training, etc)
- ᓇᓂᑦᓗᓂᑦᓗᑲᓂᑦᑕᓯᓂᑦᓗ ᙰᓂᑦᑕᓯ ᑦᓂᓯᓕᓗᐅᓗᐅ ᙰᓂᑦᑕᓯ ᑦᓂᓂᑦᑕᓯᓂᑦᓗᐅ
- ᑕᓂᑦᓄᓂ ᙰᓂᑦᑕᓯ ᐅᓯᓂᓂᑦᓗᐅ ᐅᓂᑦᓗᐅᓂᑦᓗᐅ (ᓂᓗᐅᓂᑦᓗᐅᓂᑦᓗ) ᐅᓯᓂᑦᓗᐅ ᑕᓄᓗᑲᓂᑦᑕᓯᓂᑦᓗ ᑕᓄᓗᑲᓂᑦᑕᓯᓂᑦᓗ
- ᐅᓯᓂᑦᓗᐅ ᓇᓂᑦᓗᓂᑦᓗᑲᓂᑦᑕᓯᓂᑦᓗ ᓄᓂᑕᓄᓗᐅ ᓄᓂᑦᓗᐅ ᓄᓂᑦᓗᐅᓂᑦᓗ (ᓄᓂᑦᓗᐅᓂᑦᓗᐅ ᑦᓂᓂᓗᐅᓂᑦᓗ, ᓇᓂᑦᓗᐅ ᑦᓂᓂᓗᐅᓂᑦᓗ, COTA-ᓯ ᓄᓂᑦᓗᐅᓂᑦᓗᐅ ᓄᓂᑦᓗᐅᓂᑦᓗ ᓄᓂᓗᐅᓂᑦᓗᐅᓂᑦᓗ, ᐅᓂᑦᓗᐅᓂᑦᓗ)



Traditional Knowledge in the EMR

Polar Bear observations near Wemindji:

ᓄᓂᓐ ᑕᓄᓗᓂᓐ ᑖᓐᑕᓯᓚᓯᓐ ᑕᓄᓗᓂᓐ ᓂᓐᓂᓐᓂᓐᓂᓐ:

- Some observations during fieldwork (bird surveys, polar bear study, etc)
- No cabin or traditional activity on these islands
- Some observations + human-bear interactions on the coast
- ᓄᓂᓐᓂᓐᓂᓐ ᓄᓂᓐᓂᓐᓂᓐ ᓄᓂᓐᓂᓐᓂᓐ (ᓂᓐᓂᓐᓂᓐ ᓂᓐᓂᓐᓂᓐᓂᓐ, ᓄᓂᓐᓂᓐ ᓂᓐᓂᓐᓂᓐᓂᓐ, ᓄᓂᓐᓂᓐᓂᓐ)
- ᓄᓂᓐᓂᓐᓂᓐ ᓂᓐᓂᓐᓂᓐ ᓄᓂᓐᓂᓐᓂᓐ ᓄᓂᓐᓂᓐᓂᓐ ᓄᓂᓐᓂᓐᓂᓐ ᓄᓂᓐᓂᓐᓂᓐ ᓄᓂᓐᓂᓐᓂᓐ
- ᓄᓂᓐᓂᓐᓂᓐ ᓂᓐᓂᓐᓂᓐ ᓄᓂᓐᓂᓐᓂᓐ ᓄᓂᓐᓂᓐᓂᓐ ᓄᓂᓐᓂᓐᓂᓐ ᓄᓂᓐᓂᓐᓂᓐ



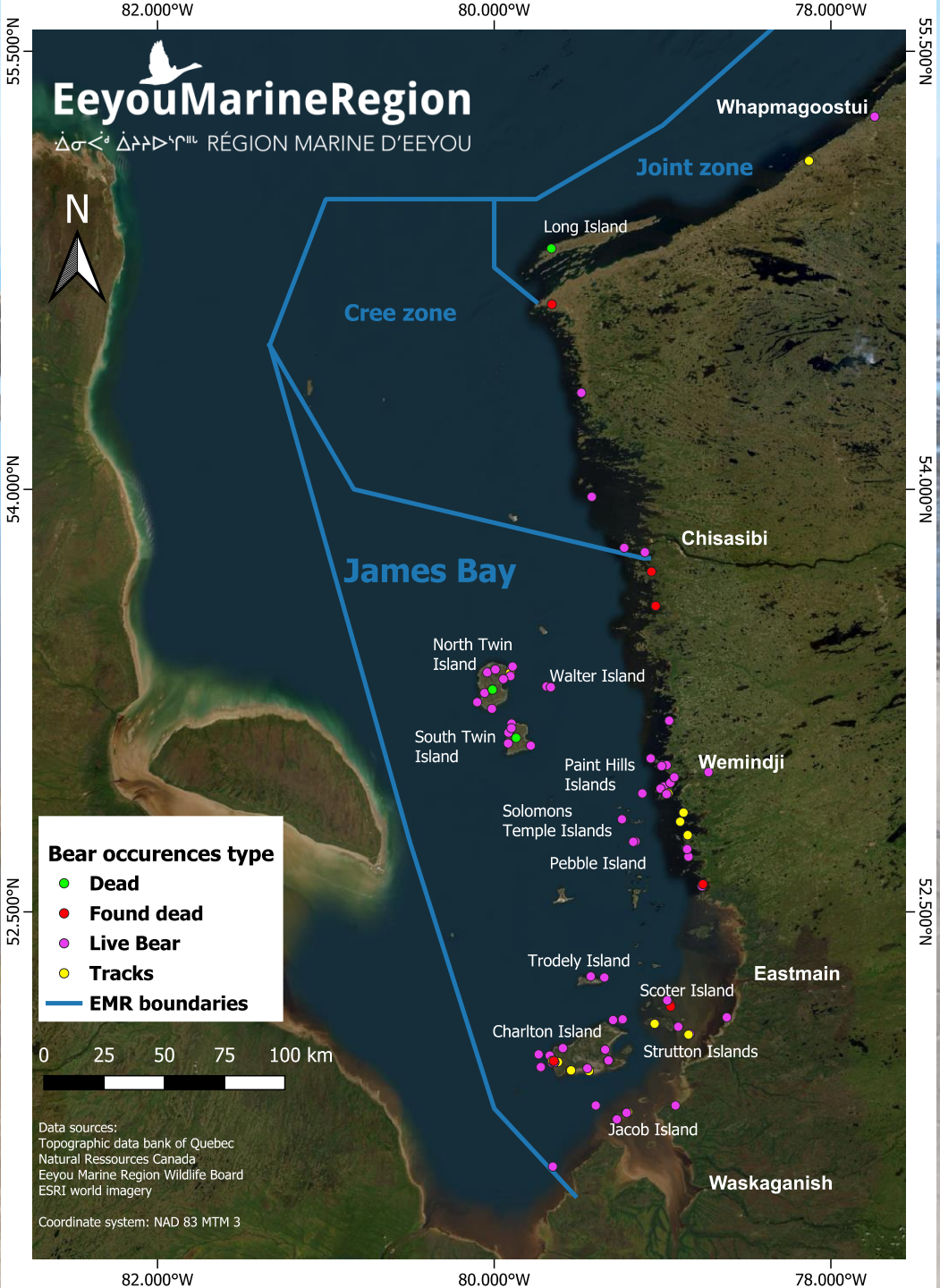
Traditional Knowledge in the EMR

Harvest

- *“People no longer pursue bears actively like they did in the past. Back then even the Cree were eating polar bears. Inuit were more aggressive in their pursuit of polar bears.” – Resident of Chisasibi*
- *“ᐃᓂᐃᑦ ᓇᓂᑦᓱᐅᑦᑵᐅᐅᑦ ᓄᑦᐅᑦᑲᑦᑲᑦᑲᑦ. ᓄᑦᐅᑦᑲᑦᑲᑦᑲᑦ ᓄᑦᐅᑦᑲᑦᑲᑦᑲᑦ
ᓇᓂᑦᓱᐅᑦᑵᐅᐅᑦ ᓄᑦᐅᑦᑲᑦᑲᑦᑲᑦ. ᐃᓂᐃᑦ ᓇᓂᑦᓱᐅᑦᑵᐅᐅᑦ ᓄᑦᐅᑦᑲᑦᑲᑦᑲᑦ” – ᓱᑦᐅᑦᑲᑦᑲᑦᑲᑦᑲᑦ⁹⁶*

Polar Bear Database 2017-now

ᐃᑦᑭᑦ ᐱᑦᑲᑦᑲᑦᑲᑦᑲᑦᑲᑦ
2017-ᑦᑲᑦᑲᑦᑲᑦᑲᑦᑲᑦ





Thank you, Meegwetch!

Questions? Comments?